



Hardware solutions for PACS supported by Barco & HP

Windows 7, Windows 8.1 and Windows 10 Support

Visually intensive medical applications (PACS) require professional quality workstations, as consumer-grade systems may not meet the power, cooling or reliability specifications demanded by your customers and clients.

Using the proper workstation ensures optimal performance of your Barco display systems. The following models have been tested and validated to work properly with Barco's imaging products.

Dual-head (2/3/5MP) grayscale displays with navigational display



Slot	Z4	Graphics Card			Z6	Graphics Card	
		Option 1	Option 2	Option 3		Option 1	Option 2
1	PCIe3 x16	MXRT-2600	MXRT-5600	MXRT-7600	PCIe3 x16	MXRT-5600	MXRT-7600
2	PCIe3 x4				PCIe3 x4		
3	PCIe3 x16	MXRT-2600			PCIe3 x16		
4	PCIe3 x4				PCIe3 x4		
5	PCIe2 x8				PCIe2 x8		
6							

Dual-head (2/3/5MP) grayscale displays with 3D/navigational display



Slot	Z4	Graphics Card			Z6	Graphics Card	
		Option 1	Option 2	Option 3		Option 1	Option 2
1	PCIe3 x16	MXRT-2600	MXRT-5600	MXRT-7600	PCIe3 x16	MXRT-5600	MXRT-7600
2	PCIe3 x4				PCIe3 x4		
3	PCIe3 x16	MXRT-2600			PCIe3 x16		
4	PCIe3 x4				PCIe3 x4		
5	PCIe2 x8				PCIe2 x8		
6							

Quad-head (2/3/5MP) grayscale displays with navigational display



Slot	Z4	Graphics Card		Z6	Graphics Card	
		Option 1	Option 2		Option 1	Option 2
1	PCIe3 x16	MXRT-5600	MXRT-7600	PCIe3 x16	MXRT-5600	MXRT-7600
2	PCIe3 x4			PCIe3 x4		
3	PCIe3 x16	MXRT-2600	MXRT-2600	PCIe3 x16	MXRT-2600	MXRT-2600
4	PCIe3 x4			PCIe3 x4		
5	PCIe2 x8			PCIe2 x8		
6						

Quad-head (2/3/5MP) grayscale displays with 3D/navigational display



Slot	Z4	Graphics Card		Z6	Graphics Card	
		Option 1	Option 2		Option 1	Option 2
1	PCIe3 x16	MXRT-5600	MXRT-7600	PCIe3 x16	MXRT-5600	MXRT-7600
2	PCIe3 x4			PCIe3 x4		
3	PCIe3 x16	MXRT-5600	MXRT-5600	PCIe3 x16	MXRT-5600	MXRT-5600
4	PCIe3 x4			PCIe3 x4		
5	PCIe2 x8			PCIe2 x8		
6						

Dual-head (2/3MP) color or single-head Fusion (4MP/6MP) color displays



Slot	Z4	Graphics Card		Z6	Graphics Card	
		Option 1	Option 2		Option 1	Option 2
1	PCIe3 x16	MXRT-2600	MXRT-5600	PCIe3 x16	MXRT-2600	MXRT-5600
2	PCIe3 x4			PCIe3 x4		
3	PCIe3 x16			PCIe3 x16		
4	PCIe3 x4			PCIe3 x4		
5	PCIe2 x8			PCIe2 x8		
6						

Dual-head (2/3MP) color or single-head Fusion (4/6MP) color displays with navigational display



Slot	Z4	Graphics Card		Z6	Graphics Card	
		Option 1	Option 2		Option 1	Option 2
1	PCIe3 x16	MXRT-2600	MXRT-5600	PCIe3 x16	MXRT-5600	MXRT-7600
2	PCIe3 x4			PCIe3 x4		
3	PCIe3 x16	MXRT-2600		PCIe3 x16		
4	PCIe3 x4			PCIe3 x4		
5	PCIe2 x8			PCIe2 x8		
6						

Dual-head (2/3MP) color or single-head Fusion (4/6MP) color displays with 3D/navigational display



Slot	Z4	Graphics Card		Z6	Graphics Card	
		Option 1	Option 2		Option 1	Option 2
1	PCIe3 x16	MXRT-5600	MXRT-7600	PCIe3 x16	MXRT-5600	MXRT-7600
2	PCIe3 x4			PCIe3 x4		
3	PCIe3 x16			PCIe3 x16		
4	PCIe3 x4			PCIe3 x4		
5	PCIe2 x8			PCIe2 x8		
6						

Quad-head (2/3MP) color or dual-head Fusion (4/6MP) color displays with navigational display



Slot	Z4	Graphics Card		Z6	Graphics Card	
		Option 1	Option 2		Option 1	Option 2
1	PCIe3 x16	MXRT-5600	MXRT-7600	PCIe3 x16	MXRT-5600	MXRT-7600
2	PCIe3 x4			PCIe3 x4		
3	PCIe3 x16	MXRT-2600	MXRT-2600	PCIe3 x16	MXRT-2600	MXRT-2600
4	PCIe3 x4			PCIe3 x4		
5	PCIe2 x8			PCIe2 x8		
6						

Quad-head (2/3MP) color or dual-head Fusion (4/6MP) color displays with 3D/navigational display



Slot	Z4	Graphics Card		Z6	Graphics Card	
		Option 1	Option 2		Option 1	Option 2
1	PCIe3 x16	MXRT-5600	MXRT-7600	PCIe3 x16	MXRT-5600	MXRT-7600
2	PCIe3 x4			PCIe3 x4		
3	PCIe3 x16	MXRT-5600	MXRT-5600	PCIe3 x16	MXRT-5600	MXRT-5600
4	PCIe3 x4			PCIe3 x4		

Dual-head Nio Color 5MP



Slot	Z4	Graphics Card		Z6	Graphics Card	
		Option 1	Option 2		Option 1	Option 2
1	PCIe3 x16	MXRT-5600	MXRT-7600	PCIe3 x16	MXRT-5600	MXRT-7600
2	PCIe3 x4			PCIe3 x4		
3	PCIe3 x16			PCIe3 x16		
4	PCIe3 x4			PCIe3 x4		

Dual-head Nio Color 5MP with navigational display



Slot	Z4	Graphics Card		Z6	Graphics Card	
		Option 1	Option 2		Option 1	Option 2
1	PCIe3 x16	MXRT-5600	MXRT-7600	PCIe3 x16	MXRT-5600	MXRT-7600
2	PCIe3 x4			PCIe3 x4		
3	PCIe3 x16			PCIe3 x16		
4	PCIe3 x4			PCIe3 x4		

Dual-head Nio Color 5MP with 3D/color navigational display



Slot	Z4	Graphics Card		Z6	Graphics Card	
		Option 1	Option 2		Option 1	Option 2
1	PCIe3 x16	MXRT-5600	MXRT-7600	PCIe3 x16	MXRT-5600	MXRT-7600
2	PCIe3 x4			PCIe3 x4		
3	PCIe3 x16			PCIe3 x16		
4	PCIe3 x4			PCIe3 x4		

Quad-head Nio Color 5MP



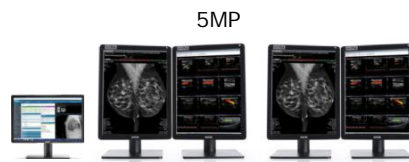
Slot	Z4	Graphics Card		Z6	Graphics Card	
		Option 1	Option 2		Option 1	Option 2
1	PCIe3 x16	MXRT-7600		PCIe3 x16	MXRT-7600	
2	PCIe3 x4			PCIe3 x4		
3	PCIe3 x16			PCIe3 x16		
4	PCIe3 x4			PCIe3 x4		

Quad-head Nio Color 5MP with navigational display



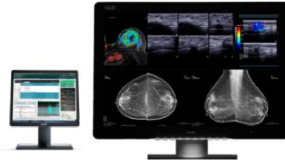
Slot	Z4	Graphics Card		Z6	Graphics Card	
		Option 1	Option 2		Option 1	Option 2
1	PCIe3 x16	MXRT-7600		PCIe3 x16	MXRT-7600	
2	PCIe3 x4			PCIe3 x4		
3	PCIe3 x16	MXRT-2600		PCIe3 x16	MXRT-2600	
4	PCIe3 x4			PCIe3 x4		

Quad-head Nio Color 5MP with 3D/color navigational display



Slot	Z4	Graphics Card		Z6	Graphics Card	
		Option 1	Option 2		Option 1	Option 2
1	PCIe3 x16	MXRT-7600		PCIe3 x16	MXRT-7600	
2	PCIe3 x4			PCIe3 x4		
3	PCIe3 x16	MXRT-2600		PCIe3 x16	MXRT-2600	
4	PCIe3 x4			PCIe3 x4		

Coronis Uniti® Display with navigational display



Slot	Z4	Graphics Card	Z6	Graphics Card
1	PCIe3 x16	MXRT-7600	PCIe3 x16	MXRT-7600
2	PCIe3 x4		PCIe3 x4	
3	PCIe3 x16		PCIe3 x16	
4	PCIe3 x4		PCIe3 x4	
5	PCIe2 x8		PCIe2 x8	

Workstation and Display Controller Specifications



MXRT-2600



MXRT-5600



MXRT-7600

Display Controller	Part Number	Bus Type	Power
MXRT-2600	K9306041	PCIe x16	26 W
MXRT-5600	K9306043	PCIe x16	75 W
MXRT-7600	K9306044	PCIe x16	150 W



Z4

Z6

Workstation	Power Supply
Z4	465 W or 1000 W
Z6	700 W or 1000 W

M00734-R01-0418-TH

Technical specifications are subject to change without prior notice.
Please check www.barco.com for the latest specifications.
The latest version of this brochure can be found on www.barco.com.

ENABLING BRIGHT OUTCOMES

BARCO